

CHONGQING  
ADORATION  
TECHNOLOGY CO., LTD.



# ADORATION

## Injection Packer

### Product Identifier

Product Name

Injection Packer

### Description

Adoration Injection Packers function as access points and linking components between injection machinery and the structure. A one-way valve—like a Zerk or button head fitting—is positioned at the top of each packer to enable direct and controlled connection with the injection system.

### Supplier Details

1-3, Mansion 6, 32#,  
YuNan DaDao, BaNan District,  
Chongqing, China

### Uses

Adoration Injection Packers function as critical filling valves and connection points between the injection equipment and structural elements. They are primarily used for sealing and repairing cracks by injection, making them suitable for a variety of injection materials such as polyurethane, epoxy, and cementitious grouts. Their versatility allows application in waterproofing, structural reinforcement, and concrete restoration projects.

### Emergency Phone Numbers

Call Adoration  
Day or Night

+86 13983390012  
023-63538530

### Advantages

- A comprehensive range of Adoration Injection Packers is available, including both Mechanical and Surface Packers.
- Engineered to withstand the required pressures and flow rates without leakage or dislodgement during operation.



## Product Data

### Form Types

#### Instant Packers(S-10,S-15)

Adoration Instant Packers are injection packers designed for quick installation and immediate removal after injection using only a hammer. Once inserted into pre-drilled holes, they create a tight seal to prevent leakage during injection. The hammer-off design eliminates waiting time, allowing injection to proceed efficiently from one point to the next. Their durable construction ensures stability under pressure and compatibility with a range of injection resins such as polyurethane, acrylic gels, and other commonly used materials.

#### Mechanical Packers (A-10, A-15, A-20, B-8, B-10, B-10S)

Mechanical packers are tubular injection fittings typically installed by threading them into specifically drilled holes. As the packer is tightened, a reinforced rubber sleeve expands and presses firmly against the sides of the borehole, allowing the packer to resist high injection pressures. This sleeve also compensates for any small irregularities within the hole, ensuring a secure seal and preventing material leakage—even in holes that are not perfectly circular.

#### Surface Packers

Surface Packers function as injection ports that are mounted directly over visible cracks on the surface of a structure, without the need for drilling. The base of the Adoration Surface Packer is equipped with a support plate to enhance surface adhesion and ensure stable positioning during injection. Adoration Surface Packers are particularly suitable for applications where drilling is restricted or not feasible. They are typically used with Adoration epoxy injection resins, ideal for structural crack repairs that require both bonding strength and reinforcement.

#### Hammer-In Packers

The Adoration Hammer-In 5/8" Button Head Plastic Injection Packer – EZ Flow Model is a robust and efficient injection port designed for high-throughput applications. Featuring a wide internal bore and built-in check valve, it ensures smooth and consistent material flow during injection. The integrated button head fits standard couplers and can be adapted to zerk-style fittings when needed. Built from durable plastic, this packer can be quickly hammered into pre-drilled holes, making it ideal for curtain grouting, slab lifting, and other large-scale waterproofing or void-filling tasks.

# Injection Packer

for Concrete Repair

## Technical Data



### Adoration Instant Injection Packers

| Type | Length      | Ø in |
|------|-------------|------|
| S-10 | 1/2" x 3.5" | 1/2" |
| S-15 | 1/2" x 5"   | 1/2" |



### Adoration Mechanical Packers

| Type  | Length      | Ø in |
|-------|-------------|------|
| A-10  | 1/2" x 3.6" | 1/2" |
| A-15  | 1/2" x 4.3" | 1/2" |
| A-20  | 1/2" x 5.5" | 1/2" |
| B-8   | 3/8" x 3.1" | 3/8" |
| B-10  | 3/8" x 4"   | 3/8" |
| B-10S | 3/8" x 4"   | 3/8" |

Note: B-10S Mechanical Packer – Single Rubber Sealing for High Pressure Grouting with PU, Epoxy & Acrylate



### Adoration Surface Packers

| Material | Ø in | Type of fitting  |
|----------|------|------------------|
| Plastic  | 1.8" | Zerk fitting, M6 |



### Adoration Hammer-in 5/8 Packers

| Material | Length    | Type of fitting |
|----------|-----------|-----------------|
| Plastic  | 5/8" x 4" | Button          |

# Injection Packer

## for Concrete Repair

### Application

#### Application Instructions

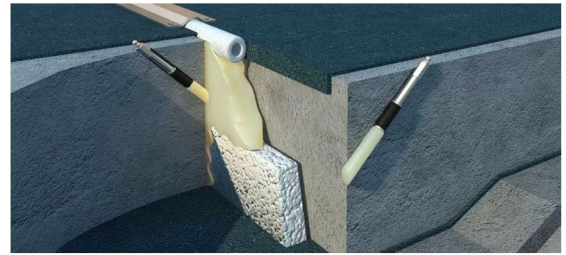
##### Instant Packers

Drill 1/2-inch holes diagonally at 6-inch intervals along the crack, ensuring they intersect with the crack inside the wall. Use a hammer drill and thoroughly clean the holes to remove debris. Proceed with high-pressure injection using Instant Packers to repair the crack. When standard methods are ineffective, Instant Packers with high-pressure systems offer efficient, controlled injection of polyurethane foam or epoxy for durable sealing.



##### Mechanical Packers

Drill holes for the Mechanical Packers according to the diagram, aligned with the intended penetration path of the injection material. The hole diameter should be slightly larger than that of the packer itself. Select the packer length to allow easy attachment and removal of the female zerk coupler or sliding coupling from the injection equipment. If the structure to be injected is old or deteriorated, the packers should be embedded deeper into the material to prevent damage around the drilled holes caused by the pressure applied during packer tightening.



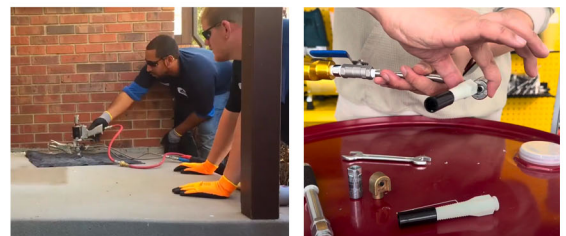
##### Surface Packers

Install the Surface Packers according to the diagram. Seal the area around the packer using Adoration Injection Adhesive, following the recommended application procedures. During installation, insert a steel nail through the packer into the crack to keep the injection channel clear of adhesive and secure the packer firmly on the surface. Once the adhesive has fully cured, carefully remove the nail.



##### Hammer-In Packers

Use a hammer to securely install the 5/8-inch Adoration Hammer-In Packer into a pre-drilled hole until the button head is flush with the surface. Ensure the hole is clean and debris-free to guarantee a firm fit. With a large internal diameter, it allows efficient injection flow. Ideal for curtain grouting and slab lifting, the packer can be quickly installed by hammering or screwing to meet high-volume injection needs.





**Value Base**

All technical specifications presented in this Product Data Sheet originate from controlled laboratory testing. Actual results may differ due to variables outside of our influence.

**Local Restrictions**

Please be advised that due to specific local regulations, the performance of this product may vary between countries. For an accurate description of the application areas, please refer to the Product Data Sheet applicable in your region.

**Health and Safety Information**

For guidance on the safe handling, storage, and disposal of chemical products, users should consult the latest Material Safety Data Sheet (MSDS), which includes information on physical properties, environmental impact, toxicology, and other safety considerations.

**Legal Notes**

The guidance provided concerning the use and application of Adoration products is offered in good faith, based on Adoration's current expertise and knowledge when the products are properly stored and handled. These recommendations do not constitute any express or implied warranty, including merchantability, nor do they establish any contractual or legal obligations. Adoration retains the right to update or modify its products at any time, while respecting third-party intellectual property rights. All purchases are subject to Adoration's standard terms of sale and delivery. Customers are advised to always refer to the most current version of the local Product Data Sheet, which is available upon request.